



NAAC
NATIONAL ASSESSMENT AND
ACCREDITATION COUNCIL

INSTRUCTIONS

This questionnaire is designed to make a survey of the basic processes related to quality management efforts in your institution. The survey consists of five sections.

1. General Profile
2. IQAC (Internal Quality Assurance Cell) activities
3. Academic and Research Outputs
4. Student Mentoring and Support System
5. Governance and Innovation

The activities of the institution in the above five sections or in other relevant areas are being surveyed to create a quality profile for the year in relation to institutional vision and goals. The survey results would enable the institution and IQAC to create a quality index profile, which would be a self learning exercise. Apart from the responses to the online survey, in case the NAAC requests for any further evidence, the information may be sent by hard copy. This would enable NAAC to make a diagnostic survey of national higher education scenario and the feedback will be provided to each participating institution. No judgement or categorization on institutional quality is intended.

IMPORTANT

In order to enable institutions to have a preview of the questionnaire, the PDF version is available on the NAAC website.

When answering this questionnaire, please ensure that no question is omitted in order to have a holistic analysis.

This survey does not allow you to have access to the filled-up form, i.e., once the 'done' button is clicked, the information will automatically reach NAAC.

In case you wish to retain printouts of the filled-up questionnaire, please take a printout of each completed page before proceeding further.

[Exit this survey](#)

1. Kindly provide the details of the institution

Name of Institution: SHIVRAJ COLLEGE OF ARTS, COI

Year of Establishment of the Institution: 26/06/1964

Address Line 1: WADARGE ROAD, GADHINGLAJ

Address Line 2: TAL- GADHINGLAJ, DIST- KOLHAP

City/Town: GADHINGLAJ

State: MAHARASHTRA

Postal Code: 416 502

Email Address: shivraj_college@yahoo.com

2. NAAC Accreditation/ Reaccreditation Details

Year of Accreditation/ Reaccreditation: 16/02/2004

Current Grade: B

CGPA: 73.25

3. Institutional Status

Affiliated Permanent

4. Contact Person Details

Name of Head of Institution: DR. S.Y. KOTMIRE

Contact Phone: 02327-222333

Email:

sykotmire@yahoo.com

Website URL:

www.shivraj.edu.in

Name of IQAC Co-ordinator

DR. S.D. PATIL

Email:

sdpatilnsr@yahoo.co

[Prev](#)

[Next](#)

SECTION I

This section is related to institutional goals, vision and mission, academic programmes and activities, strategies and action plans for institution building.

5. Number of academic programmes existing (Enter a number; 0 for nil)

| | |
|---|----|
| Undergraduate (BA/B.Sc./B.Com etc.) | 06 |
| Post Graduate (MA/M.Sc./M.Com etc.) | 02 |
| Research Programmes (M.Phil/P.hD) | 01 |
| Certificate Programmes | 06 |
| Professional Programmes (B.Tech/M.Tech/B.Ed/M.Ed/Medicine/Pharmacy/Paramedical/Nursing etc) | 0 |
| Other value added programmes | 0 |
| Any other programme offered (Specify) | 01 |

6. Details on Programme Development (Enter a number; 0 for nil)

| | |
|--|---|
| New programmes added during the year | 0 |
| New programmes signed | 0 |
| Programmes under revision | 0 |
| Interdepartmental collaborative programmes | 0 |
| Inter institutional collaborative programmes | 0 |
| Number of review committee recommendations implemented (Total) | 0 |
| Number of NAAC peer team recommendations implemented | 0 |

Number of UGC/any other expert committee recommendations implemented

Number of review committee recommendation under implementation

Number of NAAC peer team recommendations under implementation

Number of UGC/ any other expert committee recommendations under implementation

7. Faculty Details (Enter a number; 0 for nil)

Total faculty strength required as per norms for all programmes

Total faculty on rolls

Faculty added during the year

Faculty positions vacant

Faculty left during the year

Total number of visiting faculty

Total number of guest faculty

8. Qualification of Faculty

PhD and Above

MPhil

Masters

Any other (Specify)

9. Faculty qualification improvement

PhD awarded to existing faculty

MPhil awarded to existing faculty

Any other degree
awarded to existing
faculty

10. Administrative Staff Details (Enter a number; 0 for nil)

Administrative staff
(total sanctioned)

Administrative staff
(Actual strength)

Added during the year of
reporting

Left during the year

Number of posts vacant

11. Technical Support Staff Details (Enter a number; 0 for nil)

Technical Support Staff
(Total sanctioned
strength)

Technical Support Staff
(Actual strength)

Added during the year

Left during the year

Number of posts vacant

[Prev](#)

[Next](#)

[Exit this survey](#)

SECTION II

This section surveys the quality sustenance and development activities during the year taken up by IQAC.

It reflects quality management structure, strategies, and processes which would enhance academic quality of the institution as perceived by faculty, students, alumni, and other stakeholders (social perception of the institution) inline with the vision, mission and goals of the institution.

12. Establishment details

Year of establishment of IQAC

| DD | MM | YYYY |
|---------------------------------|---------------------------------|-----------------------------------|
| <input type="text" value="29"/> | <input type="text" value="09"/> | <input type="text" value="2004"/> |

13. Composition of IQAC (Enter a number; 0 for nil)

| | |
|--|---------------------------------|
| Number of IQAC members | <input type="text" value="18"/> |
| Number of Alumni in IQAC | <input type="text" value="0"/> |
| Number of Students in IQAC | <input type="text" value="0"/> |
| Number of Faculty in IQAC | <input type="text" value="12"/> |
| Number of Administrative Staff in IQAC | <input type="text" value="02"/> |
| Number of Technical Staff in IQAC | <input type="text" value="0"/> |
| Number of Management Representatives | <input type="text" value="02"/> |

Number of External experts in IQAC

Number of any other stakeholder and community representatives

14. IQAC Meetings

Number of IQAC meetings held during the year

15. Whether Calendar of activities of IQAC formulated for the academic year

Yes

16. IQAC Plans for Development (Enter a number; 0 for nil)

Number of academic programmes proposed

Number of value added programmes proposed

Number of skill oriented programmes proposed

Number of faculty competency and development programmes proposed

Number of other staff development programmes proposed

Number of student mentoring programmes proposed

Number of co-curricular activities proposed

Number of inter departmental cooperative schemes proposed

Number of community extension programmes proposed

Any other programmes proposed (Specify)

17. IQAC Plans for development & Implementation (Enter a number; 0 for nil)

Number of academic programmes implemented

Number of value added programmes implemented

Number of skill oriented programmes implemented

Number of faculty competency and development programmes implemented

Number of other staff development programmes implemented

Number of student mentoring programmes implemented

Number of co-curricular activities implemented

Number of inter departmental cooperative programs implemented

Number of

community extension
programmes
implemented

Any other
programmes
suggested that are
implemented
(Specify)

18. IQAC Seminars and Conferences (Enter a number; 0 for nil)

Number of seminars/
conferences/
workshops organized
by IQAC within the
institution

Number of participants
from the institution

Number of participants
from outside

Number of external
experts invited

Number of external
conferences/seminars/
workshops on
institutional quality
attended

Number of events
conducted with IQACs
with other institutions as
collaborative programmes

19. Did IQAC receive any funding from UGC during the year ?

Yes

No

20. If the response to Qn. 18 is Yes, please provide the amount received from UGC - (Input 0 - if NA/NIL-) Any other source including internal financial support from the management (Specify amount)

Amount Received
from UGC

Amount Received

from any other source including the college management

21. Any significant contribution made by IQAC on quality enhancement during current year (Please provide details in bullet format)

- * Expansion of Laboratories. ^
- * Construction of Ladies Hostel. v
- * COC Programmes

Prev

Next

SECTION III

In this section the events, activities, and outputs in the field of research and academic areas are being surveyed.

22. Academic Programmes

| | |
|--|----------------------------------|
| Number of new academic programmes developed or designed by faculty | <input type="text" value="0"/> |
| Number of faculty members involved in curriculam restructuring/revision/syllabus development | <input type="text" value="03"/> |
| Number of programmes in which evaluation process reformation taken up and implemented | <input type="text" value="06"/> |
| Number of active teaching days during the current academic year | <input type="text" value="240"/> |
| Average percentage of attendance of students | <input type="text" value="90"/> |
| Percentage of classes engaged by guest faculty and temporary teachers | <input type="text" value="100"/> |
| Number of self financed programmes offered | <input type="text" value="13"/> |
| Number of aided programmes offered | <input type="text" value="04"/> |
| Number of programmes discontinued during the year | <input type="text" value="0"/> |

23. Whether any systematic student feedback mechanism is in place ?

24. Feedback Details (If answer to Question 20 is Yes)

Percentage of
courses where
student feedback is
taken

25. Is feedback for improvement provided to the faculty?**26. Faculty Research, Projects, and Publication details for the year**

Number of major research
projects undertaken during
the year

Number of minor research
projects undertaken during
the year

Number of major ongoing
projects

Number of minor ongoing
projects

Number of major projects
completed

Number of minor projects
completed

Number of major project
proposals submitted for
external funding

Number of minor project
proposals submitted for
external funding

Number of research
publications in peer
reviewed journals

Number of research
publications in
international peer reviewed
journals

Number of research
publications in national
peer reviewed journals

Number of research

| | |
|---|----|
| papers accepted for publication in international peer reviewed journals | |
| Number of research papers accepted for publication in national peer reviewed journals | 0 |
| Average of impact factor of publications reported | 0 |
| Number of books published | 0 |
| Number of edited books published | 0 |
| Number of books (single authored) published | 0 |
| Number of books (coauthored) published | 0 |
| Numbers of conferences attended by faculty | 55 |
| Number of international conferences attended | 06 |
| Number of national conferences attended | 49 |
| Number of papers presented in conferences | 20 |
| Number of papers presented in international conferences | 09 |
| Number of papers presented in national conferences | 11 |
| Number of conferences organized by the institution | 04 |
| Number of faculty acted as experts resource persons | 01 |
| Number of faculty acted as experts resource persons - international | 0 |
| Number of faculty acted as experts resource persons- national | 01 |

| | |
|--|------------------------------------|
| Number of collaborations with international institutions | <input type="text" value="0"/> |
| Number of collaborations with national institutions | <input type="text" value="0"/> |
| Number of linkages created during the year | <input type="text" value="0"/> |
| Total budget for research for current year as a percentage of total institution budget | <input type="text" value="0"/> |
| Amount of external research funding received in the year | <input type="text" value="45000"/> |
| Number of patents received in the year | <input type="text" value="0"/> |
| Number of patents applied for in the year | <input type="text" value="0"/> |
| Number of research awards/ recognitions received by faculty and research fellows of the institute in the year | <input type="text" value="0"/> |
| Number of PhDs awarded during the year | <input type="text" value="0"/> |
| Percentage of faculty members invited as external experts/resource persons/reviewers/referees or any other significant research activities | <input type="text" value="2"/> |

Prev

Next

SECTION IV

This section deals with Student Mentoring and Support System existing in the institution. This includes student activities, mentoring, and opportunities for development and inclusive practices.

27. Student Details and Support Mechanisms

| | |
|--|-----------------------------------|
| The total intake of students for various courses (Sanctioned) | <input type="text" value="2660"/> |
| Actual enrollment during the year | <input type="text" value="2870"/> |
| Student dropout percentage during the year | <input type="text" value="8"/> |
| Success percentage in the final examination across the courses | <input type="text" value="86"/> |
| Number of academic distinctions in the final examination and percentage | <input type="text" value="12"/> |
| Number of students who got admitted to institutions of national importance | <input type="text" value="0"/> |
| Number of students admitted to institutions abroad | <input type="text" value="0"/> |
| Number of students qualified in UGC NET/ SET | <input type="text" value="0"/> |
| Number of students | <input type="text"/> |

qualified GATE/ CAT/
other examination
(Specify)

28. Does student support mechanism exist for coaching for competitive examinations?

29. Student participation, if response is yes to Qn. 27

Number of students
participated

30. Does student counselling and guidance service exist ?

31. Student participation, if answer to Qn. 29 is yes

Number of students
participated

32. Career Guidance

Number of career
guidance
programmes
organized

Percentage of
students participated
in career guidance
programmes

33. Is there provision for campus placement?

34. If yes to Qn. 32

Number of students
participated in
campus selection
programmes

Number of students selected for placement during the year

35. Does gender sensitization program exist ?

Yes

36. If Answer is Yes to Qn 34

Number of programmes organized

37. Student activities

Number of students participated in external cultural events

Number of prizes won by students in external cultural events

Number of cultural events conducted by the institute for the students

Number of students participated in international sports and games events

Number of students participated in national level sports and games events

Number of students participated in state level sports and games events

Number of students participated in university level sports

and games events

Number of prizes won by students in international sports and games events

Number of prizes won by students in national level sports and games events

Number of prizes won by students in state level sports and games events

Number of prizes won by students in university level sports and games events

Number of sports and games events conducted by the institute for the students

38. Composition of students

Percentage of Scheduled Caste

Percentage of Scheduled Tribe

Percentage of other Backward communities

Percentage of women students

Percentage of physically challenged

Percentage of rural students

Percentage of urban students

39. Scholarships and Financial Support

Number of students

| | |
|---|-------|
| awaiting financial support from the institution | 210 |
| Amount disbursed as financial support from the institution | 45099 |
| Number of students awarded scholarship from the institution | 05 |
| Number of students received notable national/international achievements/recognition | 425 |

40. Student initiatives

| | |
|--|----|
| Number of community upliftment programmes initiated by students | 15 |
| Number of literary programmes initiated by students | 04 |
| Number of social action initiatives based on science / environment initiated by students | 10 |
| Number of student research initiatives | 10 |

[Prev](#)[Next](#)

[Exit this survey](#)

SECTION V

This section surveys the Governance and Innovation at the institution related to quality management. The educational management strategies adopted and in practice for achieving the objectives are focussed.

41. Whether perspective plan for overall developmental activities is created ?

Yes

No

42. If the answer for Qn. 40 is Yes, is the plan implemented and monitored ?

Yes

No

43. Whether benchmarking is created for institutional quality management efforts ?

Yes

No

44. If the answer to Question 42 is Yes, please list the benchmarking in various areas of development in bullet format

| | |
|--|---|
| * College is registered with N-List consortium of INFLIBNET, Ahamedabad. | ▲ |
| * National Level Seminar in English is organized. | ▼ |

45. Is a Management Information System (MIS) in place ?

Yes

No

46. If answer to question 44 is Yes, please provide details of MIS applied to

1. Administrative procedures including finance
2. Student admission
3. Student records
4. Evaluation and examination procedures
5. Research administration
6. Others

(enter the respective details corresponding to the serial numbers)

| | |
|---|---|
| 1. Bio-metric attendance for Teaching and Administrative staff. Accounts are monitored regularly. | ^ |
| | v |

47. Existence of learning resource management

Yes

No

e-database in library

ICT and smartclass room

e-learning sources (e-Books, e-Journals)

Production of teaching modules

Interactive learning facilities

48. Internal resource mobilization : Kindly provide the amount contributed

| | |
|--------------------------|------------------------------------|
| Research | <input type="text" value="0"/> |
| Consultancy and training | <input type="text" value="0"/> |
| Student contribution | <input type="text" value="21970"/> |
| Alumni contribution | <input type="text" value="0"/> |
| Wellwishers | <input type="text" value="69750"/> |

49. Infrastructure and welfare spending: Please specify the amount

| | |
|---|-------------------------------------|
| Amount spent for infrastructure development | <input type="text" value="286062"/> |
| Amount spent for | <input type="text" value="45099"/> |

student welfare

Amount spent for
staff welfare

50. Is delegation of authority practiced

Yes

No

51. Does grievance redressal cell exist ?

Yes

No

Faculty

Students

Staff

52. Grievances received from faculty and resolved (Enter a number; 0 for nil)

Number of grievances
received

Number of grievances
resolved

53. Number of grievances received from students and resolved (Enter a number; 0 for nil)

Number of grievances
received

Number of grievances
resolved

54. Number of grievances received from other staff members and resolved (Enter a number; 0 for nil)

Number of grievances
received

Number of grievances
resolved

55. Has the institution conducted any SWOT analysis during the year

Yes

No

56. The SWOT analysis was done by internal or by external agency

Internal

External

57. Kindly provide three identified strengths from SWOT Analysis (in bullet format)

- * Connected with INFLIBNET, Ahemadabad. ^
- * Computerization of Library. v
- * The admission flow of students is overwhelming. /

58. Kindly provide three identified weaknesses from the SWOT analysis (in bullet format)

- * Inadequate infrastructure due to excess admission.
- * Inadequate funds.
- * Inadequate Laboratory facilities.

59. Kindly provide two opportunities identified from the SWOT analysis (in bullet format)

- * Construction of Sports Complex.
- * To start P.G. Courses in science stream.

60. Kindly provide two identified challenges/threats from SWOT analysis (in bullet format)

- * The students flow is reduced towards the Professional courses. ^
- * Fund Raising. v

61. Identify any significant progress made by the institution towards acheiving the goals and objectives during the year (list below in bullet format)

- * Construction of Sports complex is in progress.
- * Wi-Fi system in college campus is activated.
- * Organized National Seminar on English.

62. How do you perceive the role of NAAC in the quality development of your institution (Suggestions in bullet format to be given below)

activities. ^
* All stakeholders take initiative in the working of v
institute.

Prev

Next

[Exit this survey](#)

CONCLUDING REMARKS

This exercise is intended to make a self analysis of the quality development of the institution during the year. The perspective plan and implementation for every year is to be documented and analysed to get a cumulative index for the period of accreditation and reaccreditation. Any substantial changes / initiative in this direction is to be separately listed. The best practices in various areas can be listed as a separate annexure. The data will be used to create a quality profile based on the total score index arrived at and this would help to map the institutions' strengths and areas of improvement.

NAAC will provide feedback and a quality profile based on analysis of your inputs if you desire so.

Thank you for your participation.

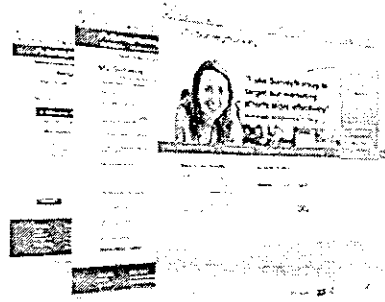
[Prev](#)[Done](#)

Thanks for completing this survey. Now create your own—it's free, quick & easy!

Create free surveys in just a few minutes

Ask questions in over 15 formats
(configured for you and ready to go!)

Get answers to any type of question



Register with SurveyMonkey today!